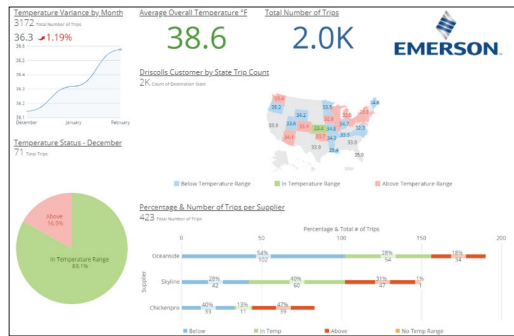


Reports and Scorecards



Consolidate cold chain data into easy to interpret formats

Getting lost in cold chain data? Technology advancements have precipitated a significant increase in the availability of shipment, temperature and location data. However, this data is only valuable if the analysis derived empower the right people to act in support of delivering quality food products to consumers.

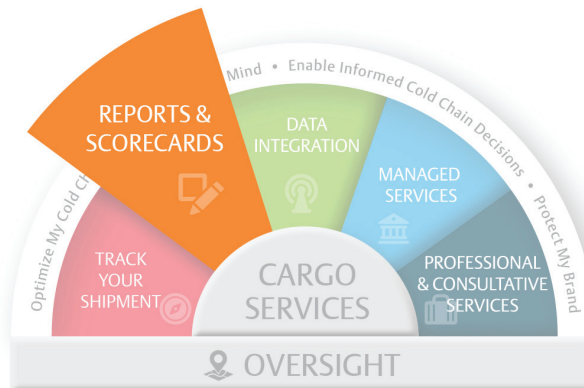


Report Example

We consolidate data from multiple inputs and turn it into actionable data:

- An easy to view temperature monitoring dashboard with key results
- Identification of trends that are meaningful to your operation
- Diagnoses of recurring issues by revealing source of the problem with the commodity, carrier, origin or destination

Learn how to convert your temperature data into a powerful tool that improves operations.



Benefits

- Complete analysis to identify specific points of excursion to achieve cold chain best practices
- Empowered to take corrective action with the right data at your fingertips
- Recommendations from our Oversight Services support team who can translate sensor data into actionable data

Emerson.com/Cargo • CargoSolutions@Emerson.com • +1 877-998-7299